

SDM – Secure Data Manager

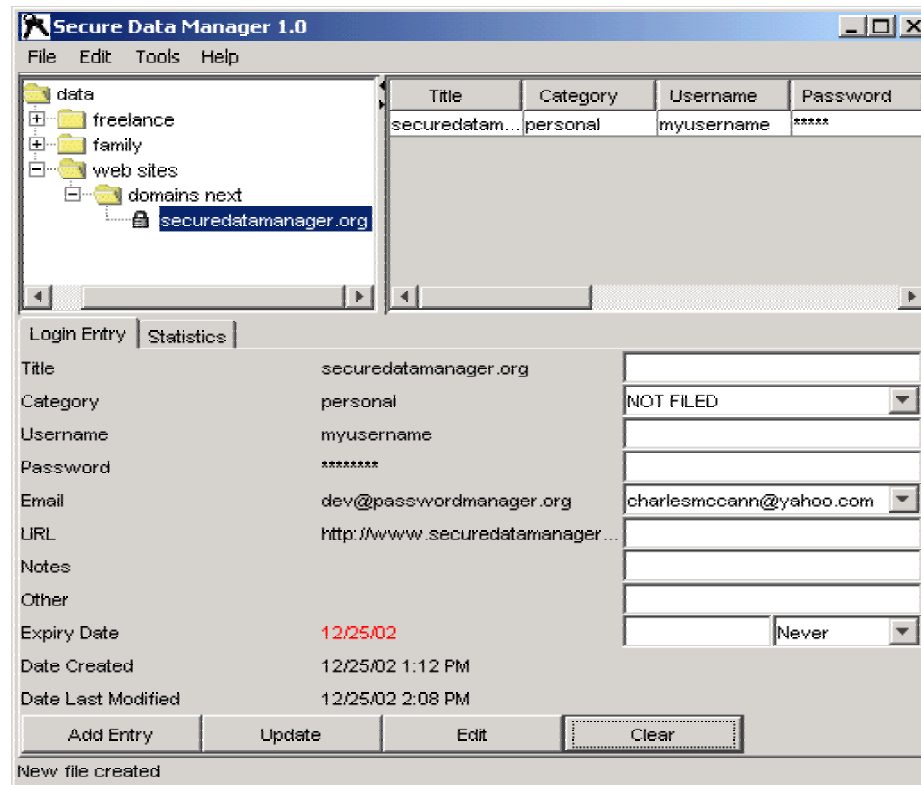
by Dalia Martisiute
dalia@ninjutsu.it

What is SDM?



- SDM – full name Secure Data Manager – is an open source password manager.
- It uses Sun's Java Cryptography Extension (JCE). Currently – DES with a 1024 bit key .

How does SDM works?



How does SDM works?

- User can entry new data as „Entries“, modify, delete it. These Entries can act as a folder or not (leaf node). User can organize the Entries whatever he/she wants.
- When saving data, the SDM asks for username and password and creates a unique passcode that is then used to encrypt the data.

About the project

- Development Status: 5 - Production/Stable
- Intended Audience: Developers, End Users/Desktop, System Administrators
- License: Apache Software License
- Operating System: 32-bit MS Windows (95/98), All 32-bit MS Windows (95/98/NT/2000/XP), OS Independent (Written in an interpreted language)
- Programming Language: Java
- Topic: Internet, Office/Business, Security
- Translations: English
- User Interface: Win32 (MS Windows)
- Size: 95 files, 501KB

SDM history

- Version 0.1.0 - 02/24/01
- Version 0.2.0 - 05/30/01
- Version 0.3.0 - 09/23/01
- Version 0.4.0 - 11/25/01
- Version 1.0 - 12/25/02
- Version 1.1 - 11/01/03

How can I improve SDM?

- Password history
- No Activity Lock
- Focus in correct location